






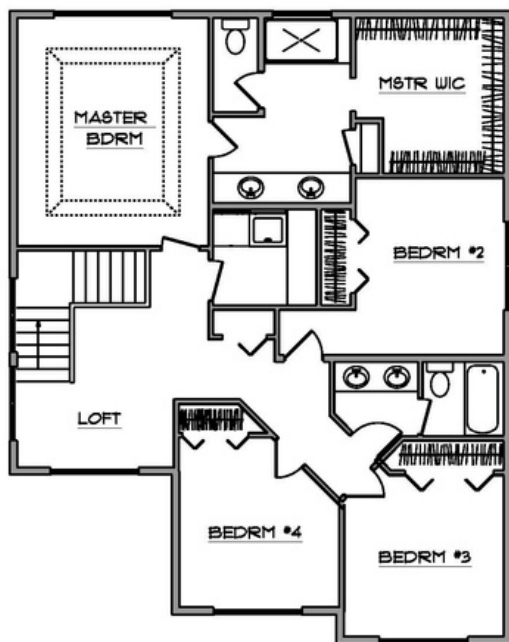
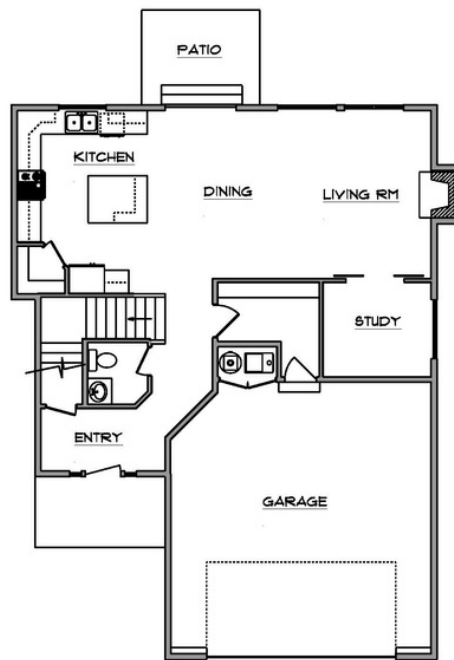
# 2 CAR *Al Rowood*

Located in the NEW Sonoma Glen at Westpark Subdivision with lots of greenbelts, double sidewalks and tree lined streets.

Close to schools, parks, shopping & minutes from the airport.

Moments outside your front door is Kincaid Park with groomed X-Country skiing trails and enjoy the only Sand Dunes in Anchorage.

 4 BDRM 
  2.5 BATH 
  2249 SQFT



## PROPERTY FEATURES

- Luxury Vinyl Flooring
- Quartz Countertops
- Stainless Steel Appliances
- Designer Cabinetry

**Crafted with Elegance for Everyday Living**



907-727-6424  
 MICHE.MERITHOMESAK@GMAIL.COM  
 MERITHOMESAK.COM  
 @MERITHOMESAK

