


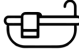



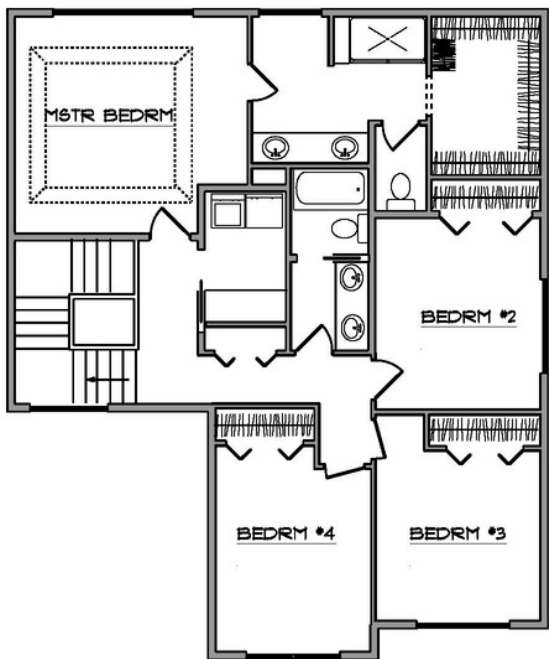
2 CAR *Bronhorse*

Located in the NEW Sonoma Glen at Westpark Subdivision with lots of greenbelts, double sidewalks and tree lined streets.

Close to schools, parks, shopping & minutes from the airport.

Moments outside your front door is Kincaid Park with groomed X-Country skiing trails and enjoy the only Sand Dunes in Anchorage.

 4 BDRM
  2.5 BATH
  2089 SQFT



PROPERTY FEATURES

- Luxury Vinyl Flooring
- Quartz Countertops
- Stainless Steel Appliances
- Designer Cabinetry

**Crafted with Elegance for
Everyday Living**



907-727-6424
 MICHE.MERITHOMESAK@GMAIL.COM
 MERITHOMESAK.COM
 @MERITHOMESAK

